

Natalja Nouri

Germany



CN:

娜塔莉娅·努里 (Natalja Nouri) 在其作品中探索心智、灵魂与精神的象征性与寓言性景观。她的绘画如同视觉冥想——层层意涵交织——邀请观者进入一种宁静却深邃的对话之中。汲取神学、心理学、宇宙学、卡巴拉以及数学等思想资源，她的艺术不仅要求观看，更呼唤沉思。她作品中的能量以明确的方向流动：从黑暗走向光明，从阳性走向阴性，

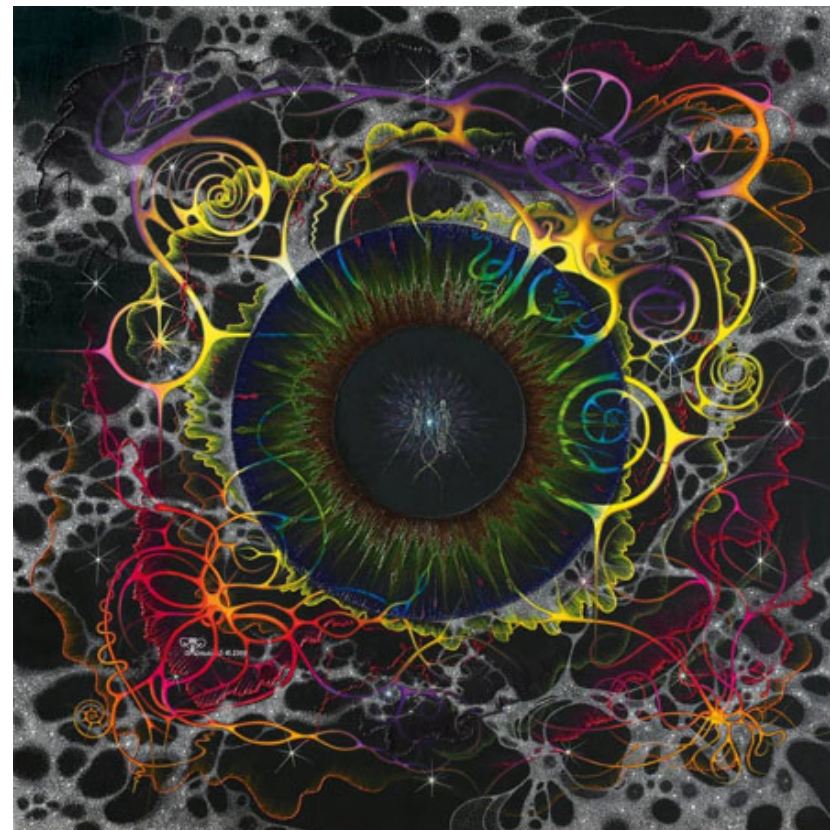
从混沌走向清晰。然而，这种流动始终保持着内在的平静。努里将原初的爱欲之流 (Eros) 转化为理性之道 (Logos) 的结构化静谧，使情感与理智达成神圣的和谐。

在《Self-Knowledge》《Vitae Unitas》和《Suil》三部作品中，努里构建了一组探讨二元性、意识与转化的“三位一体”结构。《Self-Knowledge》引领观者进入一个由镜像原型与上升之光构成的宇宙结构；《Vitae Unitas》展现人形在神圣几何的未来轴线上平衡阴与阳；《Suil》则将这一对话内化——两颗觉醒的心灵在金色的思想通道中彼此对视。这些作品共同构成通往门户——不仅通向隐秘的知识，也通向内在的平衡。通过精确的对称与富有远见的象征语言，努里创造出一个精神与结构、神话与理性融为一体的空间。

EN:

Natalja Nouri's works explore the symbolic landscapes of mind, soul, and spirit, blending theology, psychology, and mathematics. Her paintings invite deep contemplation, with energy flowing intentionally from darkness to light, chaos to clarity, and masculine to feminine. Nouri balances emotion and intellect, turning primal energy into stillness. In *Self-Knowledge*, *Vitae Unitas*, and *Suil*, she explores duality, consciousness, and transformation. *Self-Knowledge* presents cosmic archetypes, *Vitae Unitas* shows human forms balancing Yin and Yang, and *Suil* depicts a dialogue between two enlightened minds.

These works serve as portals to hidden knowledge and inner equilibrium, merging spirit, structure, myth, and reason.



Udjat
Oil on canvas
120 x 120 cm
2009



Self-knowledge

pencil, charcoal and acrylic on museum board
100 x 70 cm
2007



Genetics of life I

Oil on canvas
90 x 90 cm
2008